

**News** Sun 18 Jul 2010, 9:00 am BST

[News archive](#)

# Just in: Rapha Tailored Jacket

By Matthew Cole

This is the Tailored Jacket, created by Rapha in partnership with British bespoke tailor Timothy Everest. It's basically an off-the-peg version of the top half of the [£3,000 bespoke cycling suit](#) they launched last year, and could be yours for £400.

Made of 100 percent wool, the fabric has a check design mixed with Rapha's trademark pink detailing. Rapha claim the jacket is water and stain resistant, and say it will keep you cool in summer and warm in winter, thanks to features like the button-up rear.

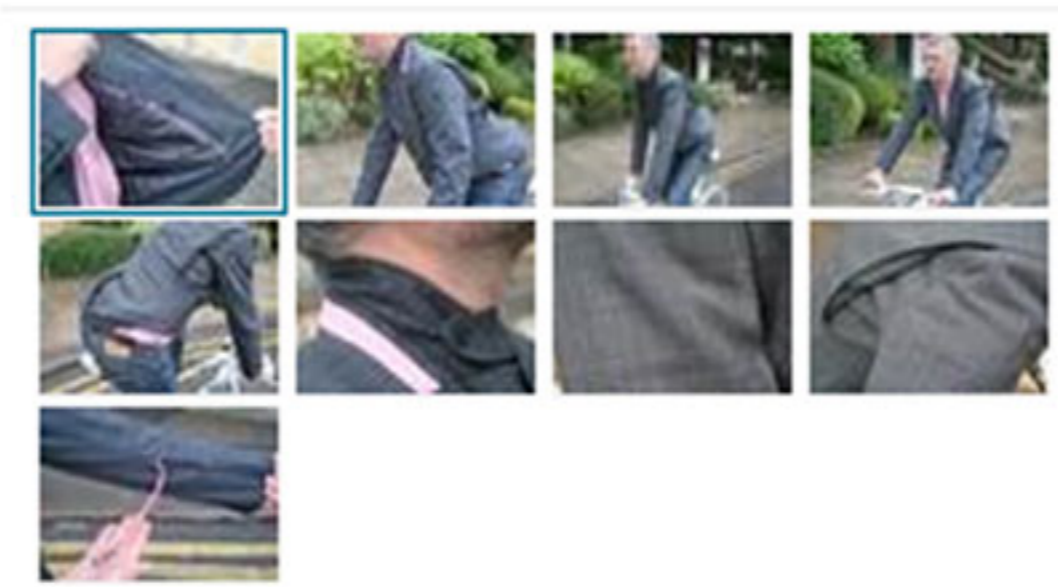
Other highlights include pleats behind the shoulders to allow for increased movement on the bike, a storm collar to keep out the wind and rain, and a zipped key pocket on the left arm.

*Cycling Plus* magazine will have a full review of the Rapha Tailored Jacket in an upcoming issue of the mag. For now, let us know what you think in the comments box below. Will you be buying one?

You can follow BikeRadar on Twitter at [twitter.com/bikeradar](#) and on Facebook at [facebook.com/BikeRadar](#).



Inside, the jacket has two in-breast pockets and an additional zipped valuables pocket (James Costley-White/BikeRadar)



## Related articles



[Rapha unveil spring/summer 2010 line](#)  
Plus new women's clothing range

[Rapha unveil their £3,000 cycling suit](#)

[Rapha to make £3,000 bike suit](#)

## Related links

[Timothy Everest](#)

[Rapha](#)

BikeRadar is not responsible for the content of external websites

[Back to top](#) | [Email to a friend](#)

Post this story to:

[What is this?](#)